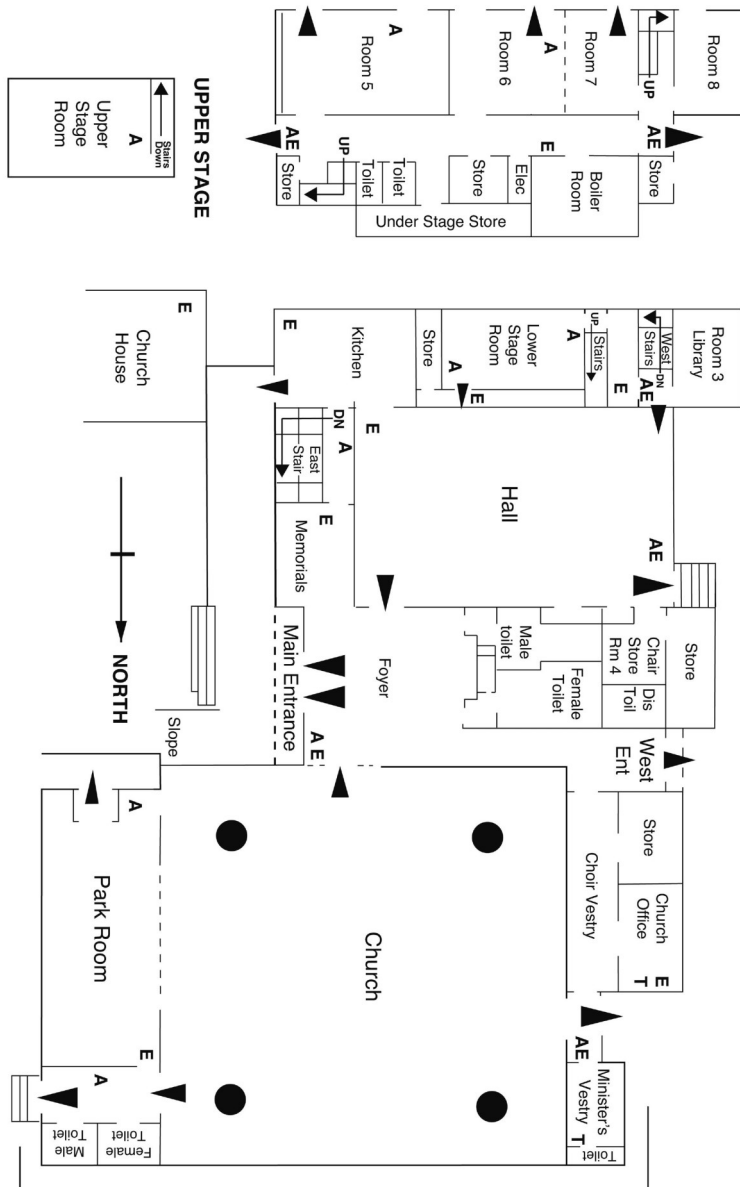
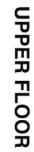
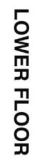


卅



## FLOOR PLANS



[www.reigateparkchurch.org](http://www.reigateparkchurch.org)





**Car Parking** - Reigate Park has a large secluded Car Park area recently re-surfaced for 70 cars plus 7 disabled spaces with easy access to the entrance vestibule with toilets and coat hanging facilities.



**Rooms 5, 6/7 (downstairs)** - are an ideal environment for children, with laminate flooring and special toilet facilities. This room adjoins a large enclosed patio area, safe for children and accessed via the patio doors.



**Church** - The main church space has staging, organ and grand piano and boasts comfortable padded seating for 260 people or 310 if used in conjunction with The Park Room which has folding doors opening onto this area.



**Hall** - The Main Hall is 16.3m x 9.8m with wood flooring and badminton court markings. Tables and stacking chairs are available and there is a small stage area with audio equipment and a piano.



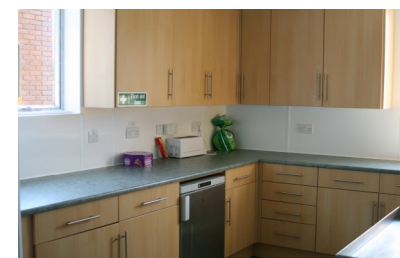
**The Park Room** - 6m x 9m has its own entrance, coat hanging and separate toilet facilities. With comfortable padded seats, there is also a kitchen area with sink, kettle, fridge and microwave. The Park Room is carpeted and ideal for meetings or small gatherings of up to 50 people. An electric piano and audio visual equipment with a 50" tv screen are available on request.



**Lower and Upper Stage Rooms** - These are carpeted and accessible via the Hall. They both have their own kitchen area, stacking tables and chairs.



**Kitchen** - There is a modern Kitchen with serving hatch adjoining the Hall. Industrial appliances are provided for food preparation and dishwashing. Cooking equipment, cutlery and crockery along with water jugs and tumblers are available.



**PLEASE SEE BOOKING FORM FOR DETAILS AND  
ROOM HIRE CHARGES**

**CONTACT: Church & Community Manager - 01737 249766  
[www.reigateparkchurch.org](http://www.reigateparkchurch.org)**